

ZGL16-I

(includes former ZXG-LEDi model)



STEP & IN GROUND | ZG16 Series | 8.00"

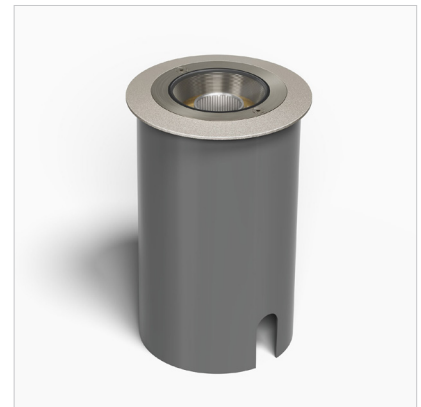
5 - 26W (400 - 2600lm) | 120V - 277V | HK LED, Amber, RGBW

FEATURES

- Robust and versatile line voltage, 120V - 277V LED in ground lighting fixture, with integral transformer in fixture housing, for use in a range of landscape and architectural outdoor lighting applications.
- 5 - 26W integrated HK LED delivering 500 - 2500 lumens. 2200 - 4000K CCT, including specialty Amber and RGBW options.
- Wet Location Listed, IP67 Standard.
- Superior corrosion resistant die-cast and machined natural brass in ground fixture, also available in Silver Nickel and Black Oxide finishes to complement varying project aesthetics.
- 360° horizontal and 20° vertical adjustability.
- Included PVC Outer Sleeve simplifies in ground installation.
- Optional Grate Cover, Slot Aperture, Top Cover, and Adjustable Shroud Shields available.
- Optional PVC Outer Sleeve simplifies installation.
- Every fixture tested end of line for water tightness and light quality.
- Readymade eligible configurations ship in 2 to 4 weeks, complete with selected accessories installed.



Line Voltage Brass In Ground LED Light:
ZGL16-IR1-NBR



ZGL16-IR1-NSN with Outer Sleeve



ZGL16-IR1-NBO installed profile with Top Cover

SPECIFICATIONS

Materials

Housing: Die-cast brass.
 Top Plate: Machined Solid Natural Brass.
 Lamp holder and Aiming Assembly: Solid billet 6061-T6 corrosion resistant aluminum.
 Hardware: 304 stainless steel.

Finish

Superior corrosion resistant Natural Brass, Silver Nickel, or Black Oxide for a robust marine grade finish.

Optional Shields

Grate Cover, Slot Aperture, Top Cover, and Adjustable Shroud Shields available.

Mounting

Mounts directly in ground, or poured concrete. Included PVC Outer Sleeve is available to aid installation (See page 4 for details).

Listings

ETL Listed for Wet Location, IP67 Standard. RoHS Compliant.

Voltage

120V - 277V AC.

Wattage

5, 7, 10, 14, 21, 26W HK LED delivers 500 to 2600 lumens.

Light Engine

Innovative HK LED Light module operates like a lamp and can be easily changed in the field. CRI 83 Standard. Available in CRI 95 upon request. Standard CCT options are 2700K, 3000K, 4000K. Specialty 2200K, 2400K, 2500K, 3500K, Amber, and RGBW options available. Consult factory for specialty LED specification details.

Dimming

Onboard, Integrated LED Driver Phase Control @ 120V, 0-10V @ 120V-277V, DALI or DMX control available. Consult factory for details.

Optics

Narrow (26°), Medium (38°), and Wide (48°) beam spread options available. Accepts up to 3 optical accessories (hexcel louver, optical lenses, dichroic color filters, etc.) Secured place with metal snap ring.

ORDERING GUIDE

EXAMPLE: ZGL16-IR1-NBR-120V-05W-27M-OS-SGC-LVR-JB-1

MODEL	PHYSICAL OPTIONS	MATERIAL / FINISH	POWER		LIGHT		INSTALLATION
ZGL16	IR1						OS
ZG16 Series 8" In Ground Light Integrated HK LED	TYPE IR1 Low Voltage, Round Single Light Integrated Driver	NBR Natural Brass NSN Natural Brass Silver Nickel ¹ NBO Natural Brass Black Oxide ¹ CCC Custom Finish ¹	VOLTAGE 120V 120V AC UNIV 120V-277V (0-10V)	WATTAGE PER LIGHT 05W 5 Watts (500lm) 07W 7 Watts (700lm) 10W 10 Watts (1000lm) 14W 14 Watts (900lm) 21W 21 Watts (2100lm) 26W 26 Watts (2600lm) SPW Specialty ²	CCT 22 2200K 24 2400K 25 2500K 27 2700K 30 3000K 35 3500K 40 4000K AM Amber ² RG RGBW ²	OPTICS N Narrow (26°) M Medium (38°) W Wide (48°) CC Custom Optic	OS Outer Sleeve, PVC (Included)

Readymade eligible configurations ship in 2 to 4 weeks.

¹ Consult factory for specialty finish quoting and lead times.

² For Specialty AM (Amber LED) and RG (RGBW LED), select SPW (Specialty) for Wattage. Consult factory for LED technical details before Specification or Order.

OPTIONAL INSTALLED ACCESSORIES

SHIELD		OPTIC		MOUNTING	
SGC	Shield, Grate Cover	LVR	Hexcel Louver	JB-1	Brass In-ground Junction Box
SSA	Shield, Slot Aperture	OSL	Overall Spread Lens		
STC	Shield, Top Cover	LSL	Linear Spread Lens		
SAS	Shield, Adjustable Shroud	SOL	Solite Soft Focus		
		DCF	Dichroic Filter		

ADDITIONAL ACCESSORIES

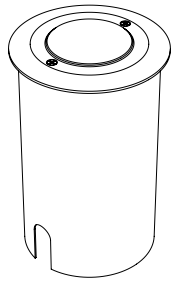
SHIELD ACCESSORIES (Optional)

SGC	Shield, Grate Cover
SSA	Shield, Slot Aperture
STC	Shield, Top Cover
SAS	Shield, Adjustable Shroud

OPTIC ACCESSORIES (Not Installed at Time of Order)

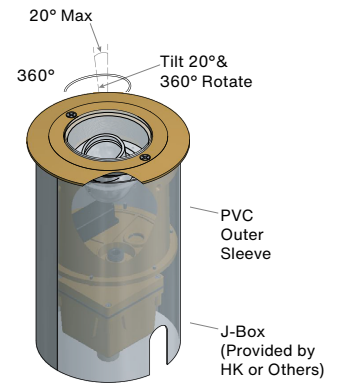
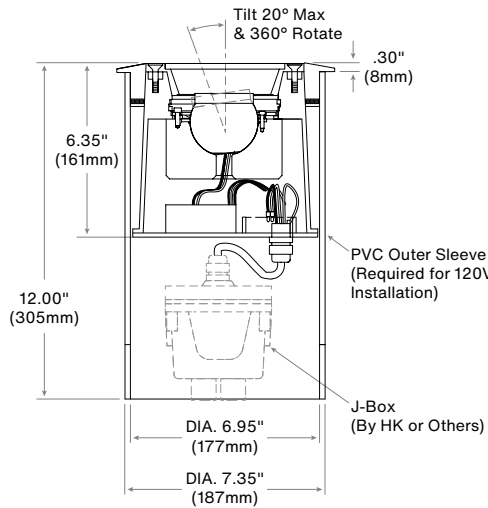
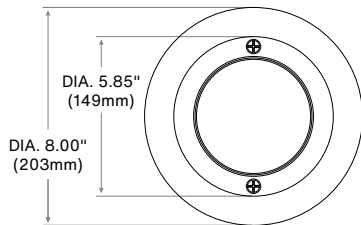
LVR-16	Hexcel Louver
OSL-16	Overall Spread Lens
LSL-16	Linear Spread Lens
SOL-16	Solite Soft Focus
DCF-16	Dichroic Filter
OPK-16G	Optic Kit for ZGL16-I - Narrow, Medium, Wide

PRODUCT DRAWINGS

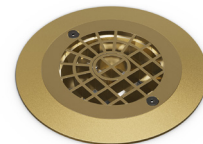
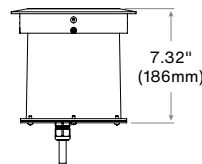
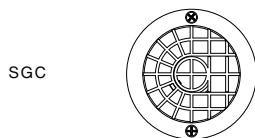


ZGL16-IR1
with Outer Sleeve

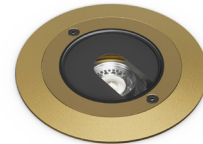
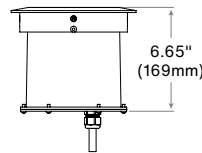
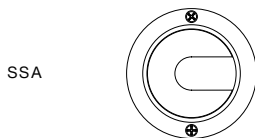
ZGL16-I



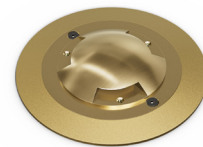
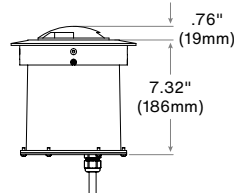
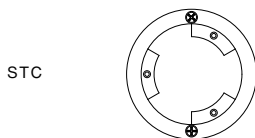
ZGL16-I
ACCESSORIES



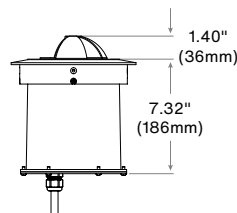
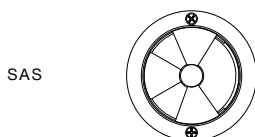
Grate Cover Shield



Slot Aperture Shield



Top Cover Shield

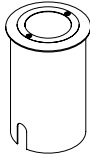


Adjustable Shroud Shield

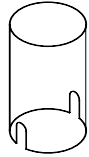
OPTIONS & ACCESSORIES

INCLUDED INSTALLATION ACCESSORIES

Outer Sleeve:



Fixture With OS



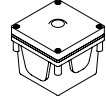
OS

MOUNTING ACCESSORIES

Ground Mount:



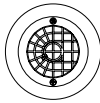
Fixture With JB-1



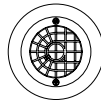
JB-1

SHIELD ACCESSORIES

Grate Cover:

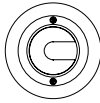


Fixture With SGC

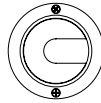


SGC

Slot Aperture:

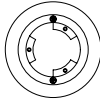


Fixture With SSA

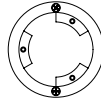


SSA

Drive Over:

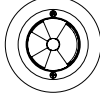


Fixture With STC

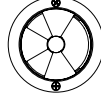


STC

Adjustable Shroud:



Fixture With SAS



SAS

■ Readymade eligible configurations ship in 2 to 4 weeks.

Notes: