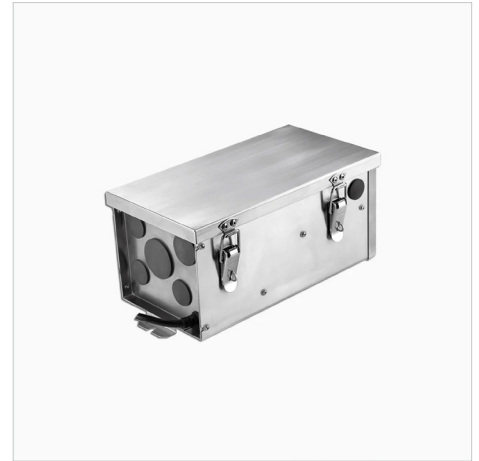


TXM-150/300

ACCESSORIES | Transformers / Magnetic Transformer

FEATURES

- Landscape Transformer, 150W or 300W.
- UL Listed for Wet Location (UL1838), IP65 Standard.
- 20 gauge, 304 stainless steel maritime grade construction.
- 120VAC input - Multitap output 12/13/14/15 VAC Nominal.
- MLV phase control dimming down to 30% when transformer is loaded to 50% or greater.
- Integrated surge protection guards against lighting strikes and power surges. Surge protection is both inbound and outbound.
- Wall or Stanchion mount, pre-punched knockouts for 3/4", 1" and 2".
- Quick removal door and bottom panel with large wire connections.
- Weight: 12lbs (150W) or 14lbs (300W).



Outdoor Magnetic Transformer: TXM-300-OTR-SS



Outdoor Magnetic Transformer - Open: TXM-300-OTR-SS

ORDERING GUIDE

EXAMPLE: **TXM-300-OTR-SS**

MODEL	WATTAGE (VA)	PRIMARY VOLTAGE
TXM		OTR-SS
Stainless steel, wet location outdoor magnetic transformer Multitap 12-15VAC Output MLV Dimming	150 150 Watts	OTR-SS 120V Only
	300 300 Watts	

SPECIFICATIONS

INPUT	150W	300W
Input Voltage Range	120VAC± 10%	120VAC± 10%
Input Frequency	50 / 60Hz	50 / 60Hz
Input Current	1.25A	2.45A
Efficiency	>91%	>91%

OUTPUT	150W	300W
12V Tap (typ.) @ Max Load	150MAX (11.22VAC, 13.44A)	270 MAX (10.97VAC 24.67A)
13V Tap (typ.) @ Max Load	150MAX (11.85VAC, 12.71A)	270 MAX (11.86VAC 23.66A)
14V Tap (typ.) @ Max Load	150MAX (12.87VAC, 11.67A)	300 MAX (12.62VAC 23.87A)
15V Tap (typ.) @ Max Load	150MAX (13.84VAC, 10.97A)	300 MAX (13.61VAC 22.05A)

OUTPUT TERMINAL BLOCK	150W	300W
Wire Gauge Capacity	16 AWG to 2 AWG	16 AWG to 2 AWG

ENVIRONMENTAL	150W	300W
Ingress Protection Rating	IP65	IP65
Minimum Installation Spacing	5" side/top, 1 ft. above ground	5" side/top, 1 ft. above ground
Thermal Class	B130°C	B130°C
Knockout Plug UV Rating	UL746C	UL746C

PROTECTION	150W	300W
Thermal Switch (Primary)	Auto Reset	Auto Reset
Circuit Breaker (Secondary)	Manual Reset	Manual Reset

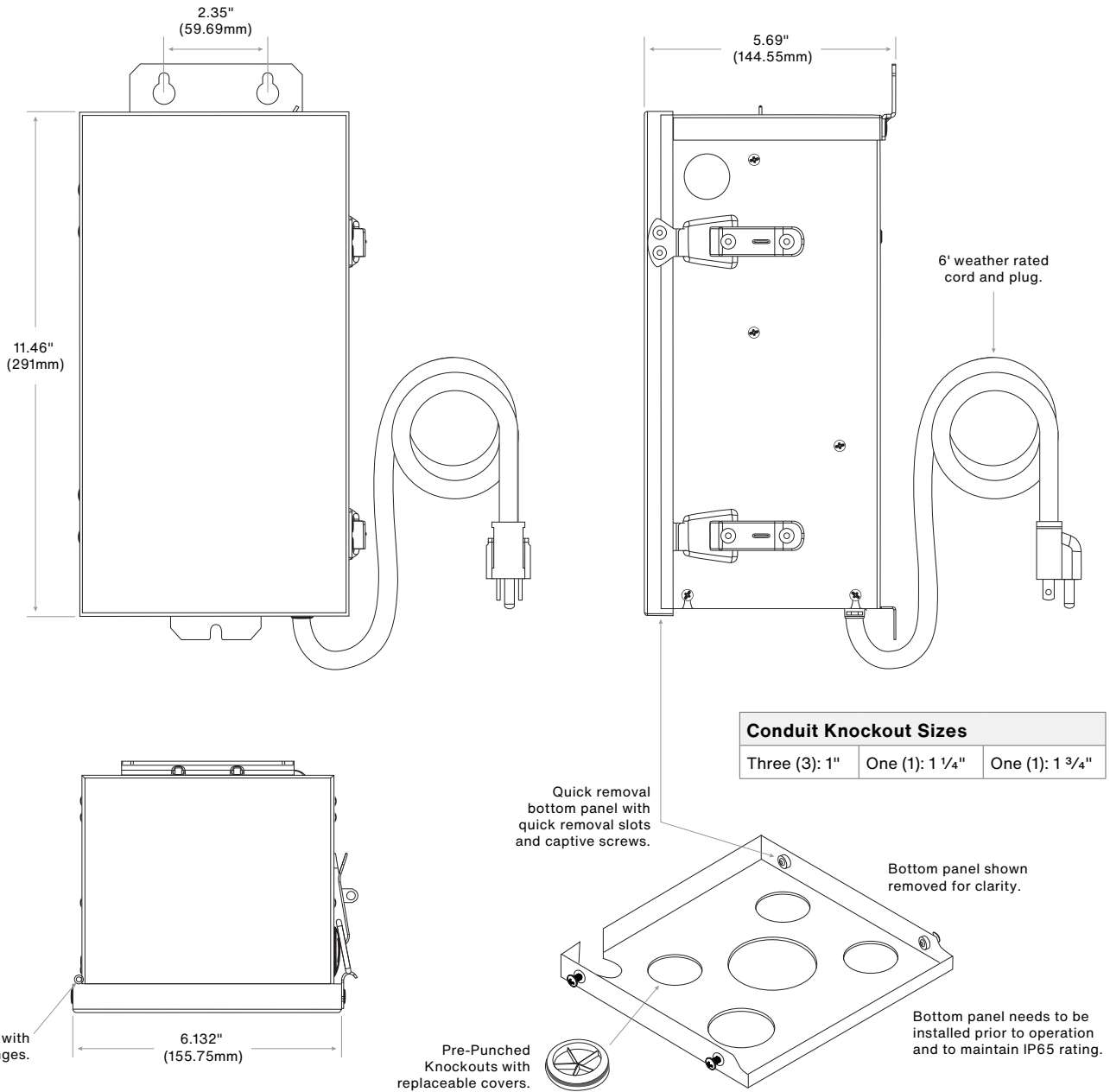
SURGE PROTECTOR (ships pre-installed on all TXM tranformer models)



Quick snap-in/plug-in installation engineered to meet ANSI surge protection standard for multiple lightning strikes.

(Product photos not to scale.)

PRODUCT DRAWINGS



Notes: